

# CATCHFORS M/T M+S



BRAKING



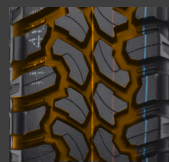
4 SEASON



STABILITY



DRAINAGE



Three main zigzag grooves and aggressive pattern design provide outstanding traction on all of road conditions



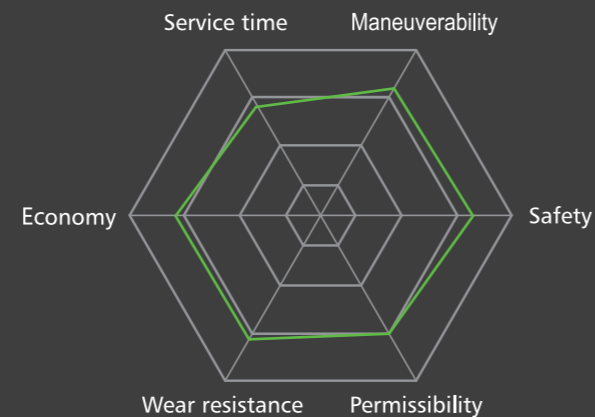
High void ratio and open shoulder offer excellent resistance to aquaplaning and self-cleaning performance



The block road design with multiple-sipes provide outstanding off-road condition. Special casing profile and solid shoulder pattern enhance the max traction and cornering performance.



Jointless Nylon band and strong structure design provide the strong carcass to enhance the reliability and durability. Special tread compound and wide footprint enhance tread life and deliver excellent braking on wet and dry roads



## CATCHFORS M/T M+S

|    | Size               | PR   | Loading Index | Speed Rating | Tread Depth (mm) | Inflatable Section Width(mm) | Standard Rim | Overall Diameter (mm) | UTQG | MAX Load Kg | MAX Load LBS | MAX Pressure Kpa | MAX Pressure Psi | Sidewall Description |
|----|--------------------|------|---------------|--------------|------------------|------------------------------|--------------|-----------------------|------|-------------|--------------|------------------|------------------|----------------------|
| 18 | 35×12.50R18LT      | 10PR | 123           | Q            | 13               | 318                          | 10J          | 877                   | -    | 1550        | 3415         | 450              | 65               | BSW                  |
|    | 33×12.50R18LT(POR) | 10PR | 118           | Q            | 13               | 318                          | 10J          | 826                   | -    | 1320        | 2910         | 450              | 65               | BSW                  |
| 17 | 37×12.50R17LT      | 8PR  | 124           | Q            | 13               | 318                          | 10J          | 928                   | -    | 1600        | 3525         | 350              | 50               | BSW                  |
|    | 35×12.50R17LT(POR) | 10PR | 121           | Q            | 13               | 318                          | 10J          | 877                   | -    | 1450        | 3195         | 450              | 65               | BSW                  |
|    | 33×12.50R17LT(POR) | 10PR | 120           | Q            | 13               | 318                          | 10J          | 826                   | -    | 1400        | 3085         | 450              | 65               | BSW                  |
|    | LT285/70R17(POR)   | 10PR | 121/118       | Q            | 13.2             | 292                          | 8 1/2J       | 832                   | -    | 1450/1320   | 3195/2910    | 550              | 80               | BSW                  |
| 16 | LT265/70R17(POR)   | 10PR | 121/118       | Q            | 13.2             | 272                          | 8J           | 804                   | -    | 1450/1320   | 3195/2910    | 550              | 80               | BSW                  |
|    | 315/75R16LT        | 10PR | 127/124       | Q            | 13               | 313                          | 8 1/2J       | 878                   | -    | 1750/1600   | 3860/3525    | 450              | 65               | BSW                  |
|    | 305/70R16LT        | 10PR | 124/121       | Q            | 13               | 311                          | 9J           | 834                   | -    | 1600/1450   | 3525/3195    | 450              | 65               | BSW                  |
|    | LT285/75R16        | 10PR | 126/123       | Q            | 13.2             | 286                          | 8J           | 834                   | -    | 1700/1550   | 3750/3415    | 550              | 80               | BSW                  |
|    | LT265/75R16        | 10PR | 123/120       | Q            | 13               | 267                          | 7 1/2J       | 804                   | -    | 1550/1400   | 3415/3085    | 550              | 80               | BSW                  |
|    | LT245/75R16(POR)   | 10PR | 120/116       | Q            | 13               | 248                          | 7J           | 774                   | -    | 1380/1260   | 3042/2778    | 550              | 80               | BSW                  |
| 15 | LT235/85R16(POR)   | 10PR | 120/116       | Q            | 13               | 235                          | 6 1/2J       | 806                   | -    | 1380/1260   | 3042/2778    | 550              | 80               | BSW                  |
|    | 35×12.50R15LT(POR) | 6PR  | 113           | Q            | 13.2             | 318                          | 10J          | 877                   | -    | 1150        | 2535         | 250              | 35               | BSW                  |
|    | 33×12.50R15LT(POR) | 6PR  | 108           | Q            | 13.2             | 318                          | 10J          | 826                   | -    | 1000        | 2205         | 250              | 35               | BSW                  |
|    | 31×10.50R15LT(POR) | 6PR  | 109           | Q            | 13               | 268                          | 8 1/2J       | 775                   | -    | 1030        | 2270         | 350              | 51               | BSW                  |
|    | LT235/75R15(POR)   | 6PR  | 104/101       | Q            | 13               | 235                          | 6 1/2J       | 733                   | -    | 900/825     | 1985/1820    | 350              | 50               | BSW                  |

The labeling information is subject to change without notice.