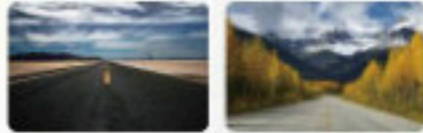


# BT165

## Suitable Conditions

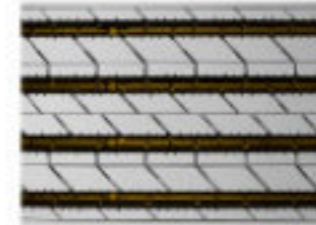
Medium and long mileage trucks running on paved and highway roads

- Ultra Wear Resistance
- Outstanding High Speed Performance
- Excellent Durability



### Excellent Stability on Handling:

Wider tread design, provides larger contact area, increased the stability of the trailer.



### Avoid Damage on Tread:

Outstanding resistance to stone damage due to a large number of stone ejection design.



### Ultra Wear Resistance:

High durability compound helps to increase the driving mileage for more than 10%.

Origin	Size	PR	Li/S5	Standard Rim	Max Load				Pressure				Tread Depth (mm)	Overall Diameter (mm)	Section Width (mm)
					(kgs)		(lbs)		(kPa)		(psi)				
					S	D	S	D	S	D	S	D			
CN	8.5R17.5	12	121/120M	6.00	1450	1400	3195	3085	625	625	90	90	11.0	802	215
CN	9.5R17.5	18	143/141J	6.75	2725	2575	6005	5675	875	875	125	125	13.5	842	240
CN	9R22.5	14	136/134M	6.75	2240	2120	4940	4675	830	830	120	120	13.5	974	229
CN	10R22.5	16	144/142L	7.50	2800	2650	6175	5840	900	900	130	130	14.5	1020	254
CN	11R22.5	16	148/145M	8.25	3150	2900	6945	6395	840	840	120	120	17.0	1054	279
CN	12R22.5	18	152/149L	9.00	3550	3250	7825	7165	930	930	135	135	17.0	1085	300
CN	13R22.5	18	154/151K	9.75	3750	3450	8270	7605	830	830	120	120	17.0	1124	320
CN	225/90R17.5	14	130/128L	6.75	1900	1800	4190	3970	760	760	110	110	13.5	851	226
CN & VN	205/75R17.5	14	124/122M	6.00	1600	1500	3525	3310	750	750	110	110	13.0	753	205
CN & VN	215/75R17.5	16	135/133L	6.00	2180	2060	4805	4540	860	860	125	125	12.5	767	211
CN & VN	235/75R17.5	18	143/141L	6.75	2725	2575	6005	5675	860	860	125	125	13.0	797	233
CN	245/70R17.5	18	134/132L	7.50	2120	2000	4675	4410	900	900	130	130	13.0	789	248
CN	225/70R19.5	14	128/126L	6.75	1800	1700	3970	3750	760	760	110	110	12.5	811	226
CN	245/70R19.5	18	144/142J	7.50	2800	2650	6175	5840	900	900	130	130	13.0	839	248
CN	265/70R19.5	18	143/141J	7.50	2725	2575	6005	5675	900	900	130	130	13.5	867	262
CN	285/70R19.5	18	150/148K	8.25	3350	3150	7390	6945	900	900	130	130	13.0	895	283
CN	255/70R22.5	16	140/137M	7.50	2500	2300	5510	5070	830	830	120	120	13.5	930	255
CN	275/70R22.5	18	148/145M	8.25	3150	2900	6940	6395	900	900	130	130	14.5	958	276
CN	295/60R22.5	18	150/147L	9.00	3350	3075	7390	6780	900	900	130	130	14.5	926	292
CN & VN	295/80R22.5	18	154/149M	9.00	3750	3250	8270	7160	850	850	125	125	16.0	1044	298
CN	315/60R22.5	18	152/148L	9.75	3550	3150	7825	6945	900	900	130	130	14.5	950	313
CN & VN	315/70R22.5	18	156/150L	9.00	4000	3350	8820	7385	900	900	130	130	15.5	1014	312
CN	315/80R22.5	20	156/153L	9.00	4000	3650	8820	8045	850	850	125	125	17.0	1076	312
VN	315/80R22.5	20	156/150(154/150)(L/M)	9.00	4000	3350	8820	7390	850	850	125	125	17.0	1076	312
CN	325/95R24	22	162/160K	9.0	4750	4500	10500	9920	850	850	123	123	15.0	1228	325

S=Single D=Dual; 1inch=25.4mm kPa=0.142psi KG~2.2lbs



suitable