

BF188

Suitable Conditions

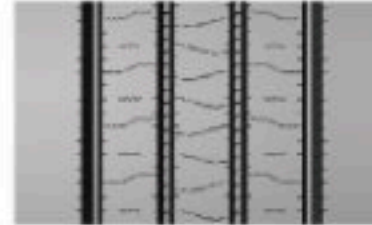
Medium and long mileage truck running on paved and highway roads

- ✔ Low Heat Generation
- ✔ Economy and Environment Friendly
- ✔ High Wear Resistance
- ✔ Outstanding Handling and Brake Performance on Wet



Optimized structural design:

Optimized design of four layer belts to ensure driving safety and comfort.



New design tread pattern:

The straight four groove pattern design of optimized layout provides good safety and handling performance for the vehicle.

Side wall steel sheet design:

Anti transline wear sipes designed to minimize irregular wear.

Origin	Size	PR	Ltr SG	Standard Rim	Max. Load				Pressure				Tread Depth (mm)	Overall Diameter (mm)	Section Width (mm)
					(kg)		(lbs)		(kPa)		(PSI)				
					S	D	S	D	S	D	S	D			
CN	8.5R17.5	12	121/120M	6.00	1450	1400	3195	3085	625	625	90	90	12.0	802	215
VN	11R22.5	16	146/143L	8.25	3000	2725	6610	6005	830	830	120	120	16.5	1054	279
CN & VN	11R22.5	18	149/146M	8.25	3250	3000	7160	6610	930	930	135	135	16.5	1054	279
CN & VN	12R22.5	18	152/149L	9.00	3550	3250	7830	7160	930	930	135	135	17.0	1085	300
VN	11R24.5	14	146/143L	8.25	3000	2725	6610	6005	720	720	105	105	16.5	1104	279
CN & VN	11R24.5	16	149/146L	8.25	3250	3000	7160	6610	830	830	120	120	16.5	1104	279
VN	205/75R17.5	14	124/122M	6.00	1600	1500	3525	3310	750	750	110	110	13.0	753	204
CN & VN	215/75R17.5	16	135/133L	6.00	2180	2060	4805	4540	860	860	125	125	12.5	767	211
CN & VN	235/75R17.5	18	143/141L	6.75	2725	2575	6005	5675	860	860	125	125	13.0	797	233
VN	245/70R17.5	18	143/141J	7.50	2725	2575	6005	5675	875	875	125	125	13.0	789	248
CN & VN	225/70R19.5	14	128/126L	6.75	1800	1700	3970	3750	760	760	110	110	12.5	811	226
VN	245/70R19.5	18	144/142J	7.50	2800	2650	6175	5840	900	900	130	130	13.0	839	248
CN & VN	265/70R19.5	18	143/141J	7.50	2725	2575	6005	5675	900	900	130	130	13.5	867	262
VN	285/70R19.5	18	150/148K	8.25	3350	3150	7390	6945	900	900	130	130	14.0	895	283
CN	305/70R19.5	18	148/145M	9.00	3150	2900	6940	6395	850	850	125	125	14.5	923	305
CN & VN	255/70R22.5	16	140/137M	7.50	2500	2300	5510	5070	830	830	120	120	12.5	930	255
VN	275/70R22.5	16	148/145M	8.25	3150	2900	6940	6395	900	900	130	130	15.0	958	276
CN & VN	275/80R22.5	18	149/146L	8.25	3250	3000	7160	6610	900	900	130	130	16.0	1012	276
VN	295/60R22.5	18	150/147L	9.00	3350	3075	7390	6780	900	900	130	130	15.0	926	292
VN	295/75R22.5	14	144/141L	9.00	2800	2575	6175	5675	760	760	110	110	16.5	1014	298
VN	295/75R22.5	16	146/143L	9.00	3000	2725	6610	6005	830	830	120	120	16.5	1014	298
CN & VN	295/80R22.5	18	154/149M	9.00	3750	3250	8270	7160	850	850	125	125	16.0	1044	298
VN	315/60R22.5	18	152/148L	9.75	3550	3150	7825	6945	900	900	130	130	14.5	950	313
VN	315/70R22.5	18	156/150L	9.00	4000	3350	8820	7390	900	900	130	130	15.5	1014	312
CN & VN	315/80R22.5	20	156/153L	9.00	4000	3650	8820	8050	850	850	125	125	17.0	1076	312
VN	315/80R22.5	20	156/150(154/150)L(M)	9.00	4000	3350	8820	7390	850	850	125	125	17.0	1076	312
VN	285/75R24.5	14	144/141L	8.25	2800	2575	6175	5675	760	760	110	110	16.5	1050	283
VN	285/75R24.5	16	147/144L	8.25	3075	2800	6780	6175	830	830	120	120	16.5	1050	283
CN	205/85R16LT	12	117/115L	5.50F	1285	1215	2835	2680	600	600	87	87	8.5	734	203
CN	10.00R20	18	149/146L	7.5	3250	3000	7160	6610	930	930	135	135	16.5	1054	278
CN	325/95R24	22	162/160K	9.0	4750	4500	10500	9920	850	850	125	125	15.0	1228	325

S=Single D=Dual, 1inch=25.4mm 1kPa=0.142psi 1KG=2.2lbs



○ suitable